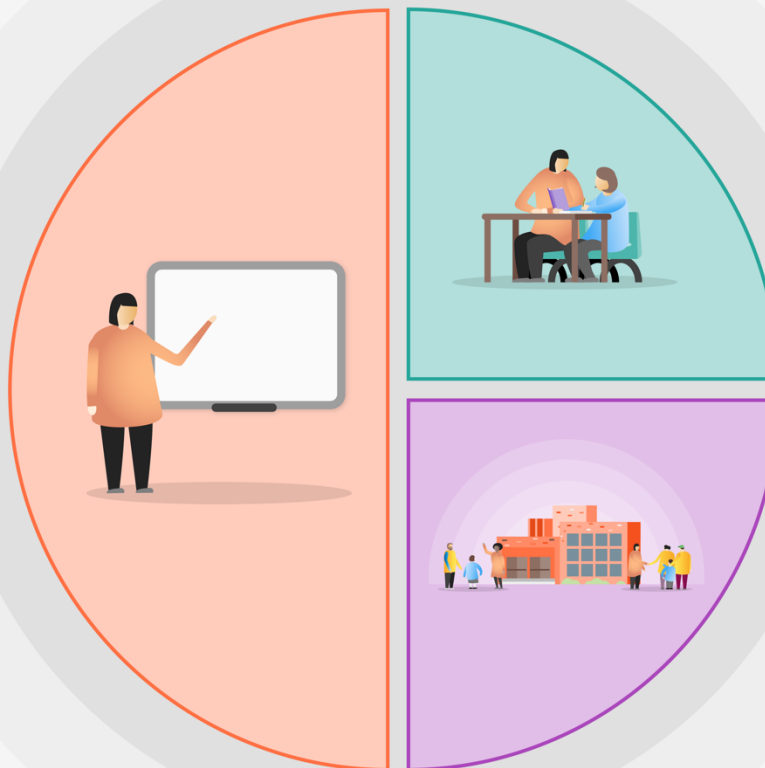


## 1 Teaching

- Quality First Teaching for all – build on existing CPD focus on the quality of teacher modelling and instruction and metacognition
- Microsoft Teams used as a platform – CPD focus for effective remote teaching, resources, assignments and h/w set
- On-line provision incorporates elements of effective teaching; clear explanations, scaffolding, practice and feedback
- Use of Knowledge organisers
- Frequent low-stakes testing to ensure all students, especially DA, experience success and celebrate acquisition of knowledge
- Effective assessment – rooted in classroom practice. Sequenced assessment and evidence of progress
- Use of Century Learning to support personalised learning for Maths and English
- Face-to-face teaching focuses on clear explanations, scaffolding, practice and feedback – use of visualisers to remove 'physical' barriers to teacher/student interactions
- Regular Curriculum time to support planning



## 2 Targeted academic support

- 1:1 and small group tuition linked to curriculum & focused on feedback and deliberate practice
- Vulnerable students not in school receive extra feedback to support learning
- Literacy and numeracy interventions for Year 7 and 8 – SENCO & TAs
- KS4 study periods supported by core teachers
- Action Tutoring Programme for DA Year 11 in Maths and English
- Saturday School /holiday sessions
- Targeted academic mentoring support – in house
- NTP – possible?

## 3 Wider strategies

- Magic Breakfast for all
- Building connection with families
- Re-establishing behavioural and learning routines – rewards and recognition review
- Forest School & counselling for targeted students
- Ensure our most vulnerable students have priority access to technology
- 'Teach First Academic Mentors' to support teaching
- Tutor Programme/ PSHE supports 'Be well'
- Regular and specific communication with parents/carers