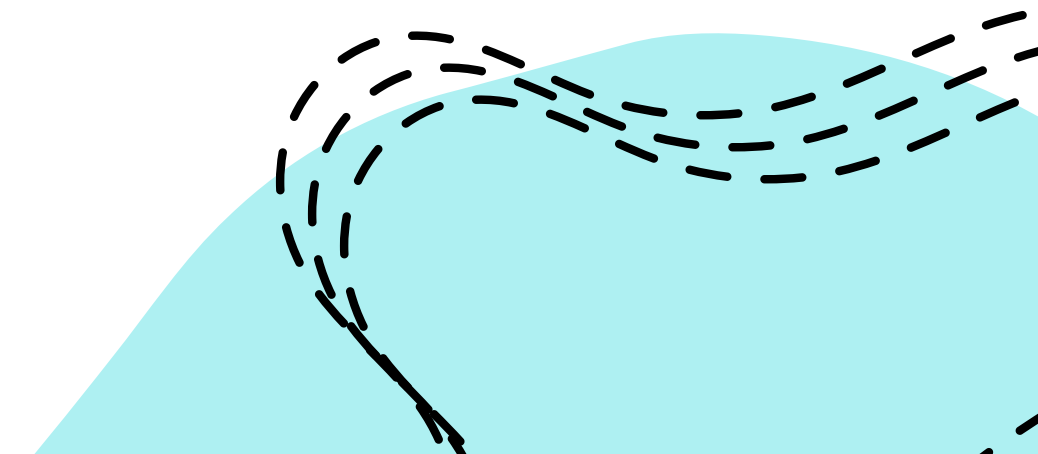
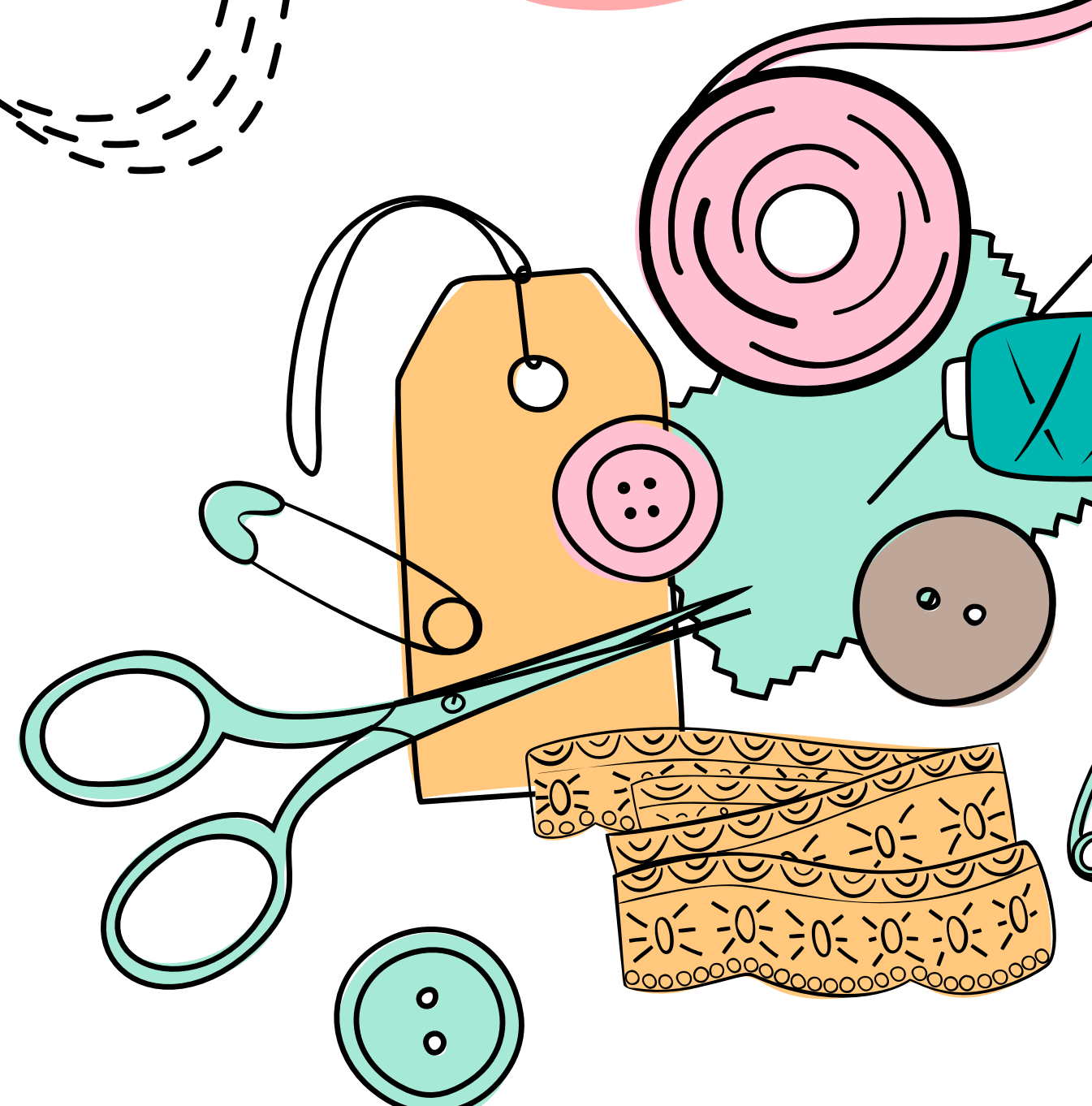
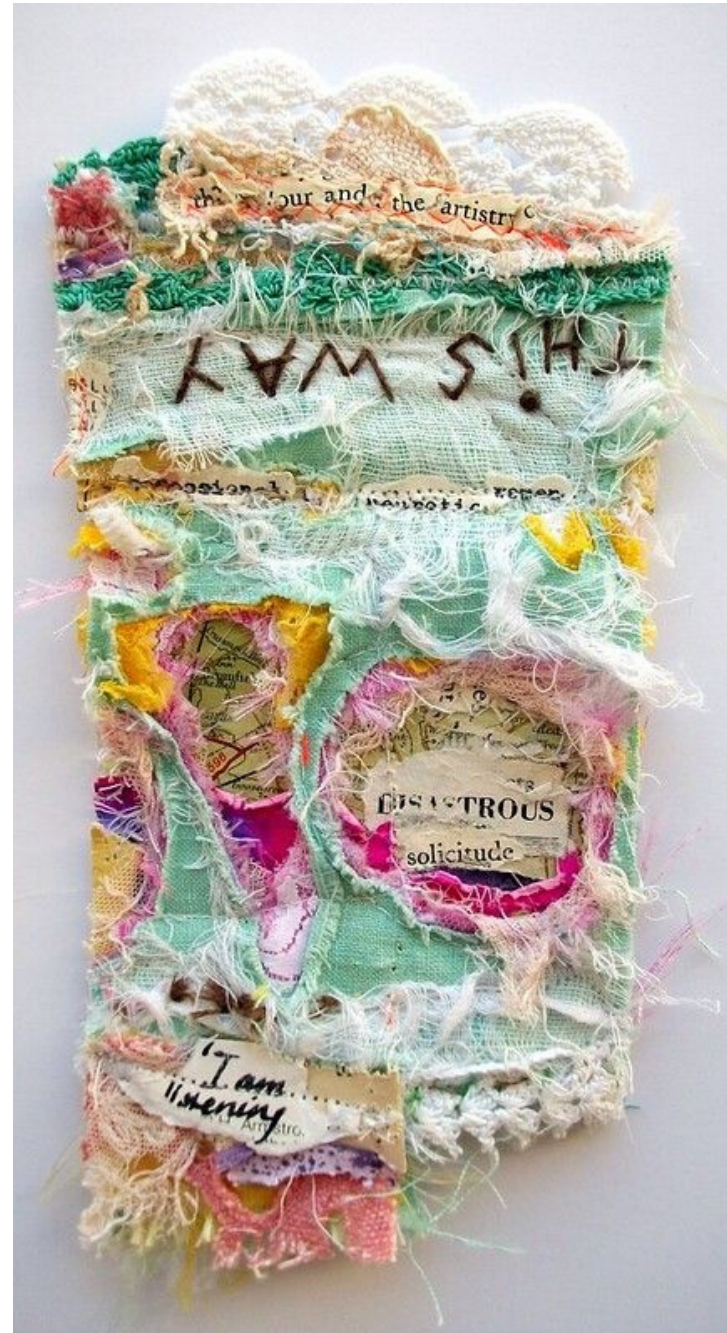




# AQA GCSE Art Textiles





# AQA GCSE Art Textiles Assessment

## Component 1

A portfolio that in total shows coverage of the four assessment objectives. It must include a sustained project evidencing the journey from initial engagement to the realisation of intentions and a selection of further work undertaken during the student's course of study.

### How it's assessed

No time limit  
96 marks  
60% of GCSE

## Component 2

Students respond to their chosen starting point from an externally set assignment paper relating to their subject title, evidencing coverage of all four assessment objectives.

### How it's assessed

Preparatory period followed by 10 hours of supervised time  
96 marks  
40% of GCSE





# GCSE Art Textiles

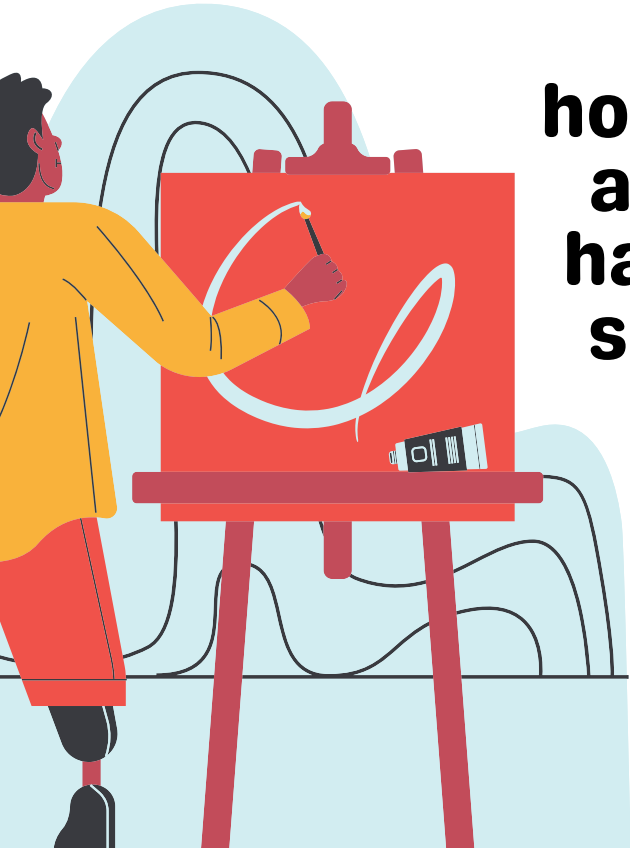


## Mixed Media

Use of a range of media to create exciting textiles.

## Drawing

A compulsory part of the course, however this can be achieved through hand, graphics and sewn techniques.



## Painting

Painting using a range of media, including transfer of images to fabric.

## Techniques

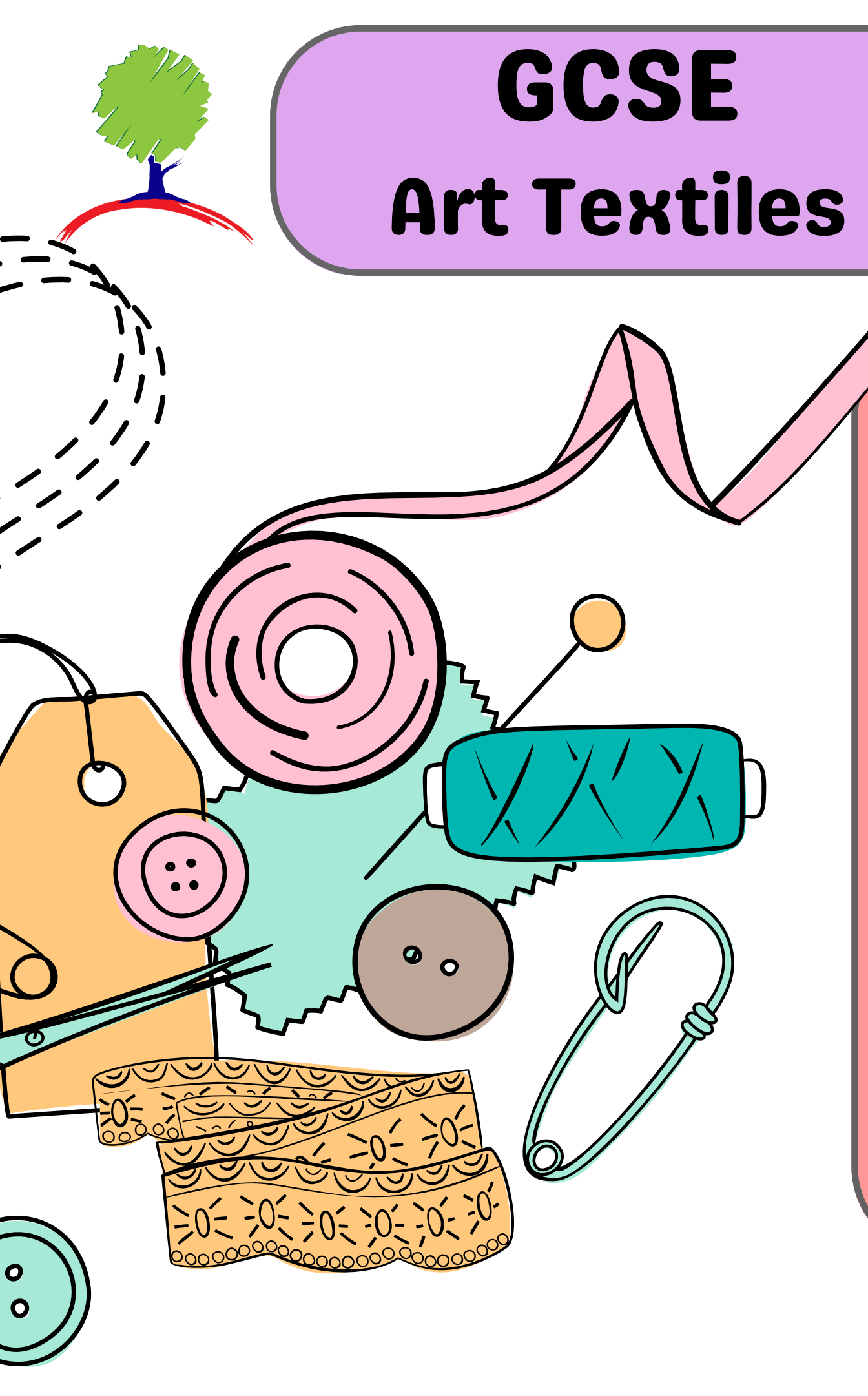
## Sewing

A range of hand and machine embroidery and embellishment.

## Printing

Using hand, screen, lino and digital techniques.





# **GCSE Art Textiles**

## **Course Structure**

### **Year 10**

**Students begin by exploring a range of media and completing workshops to give them the skills to complete the course.**

**Students will then begin an extended project for their portfolio. This includes producing a sketchbook of research, design development and written annotation.**

### **Year 11**

**Students complete their portfolio projects by December.**

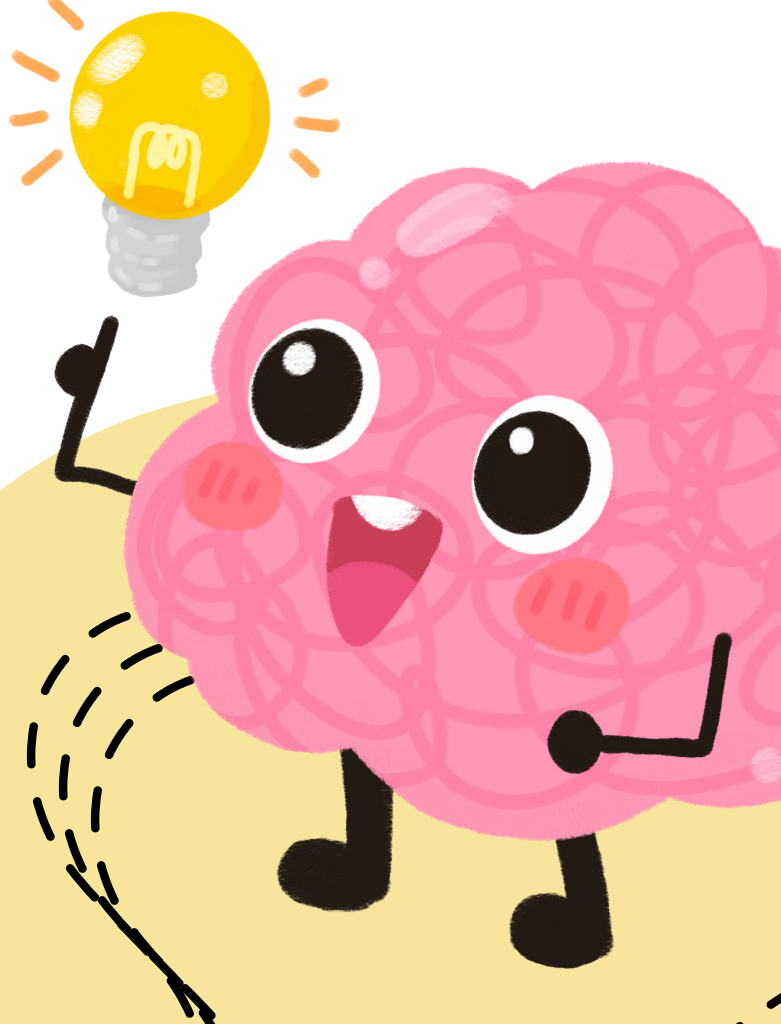
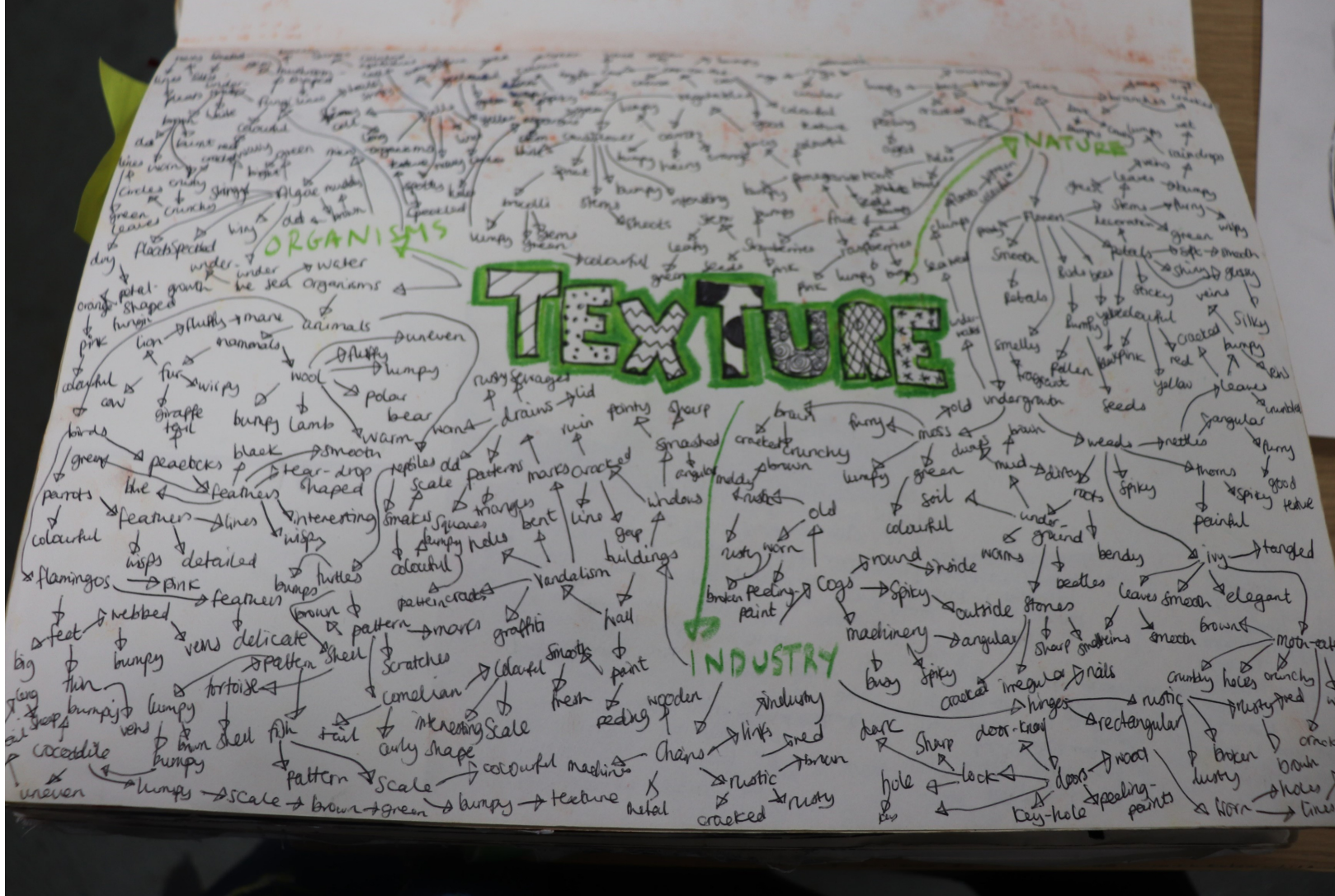
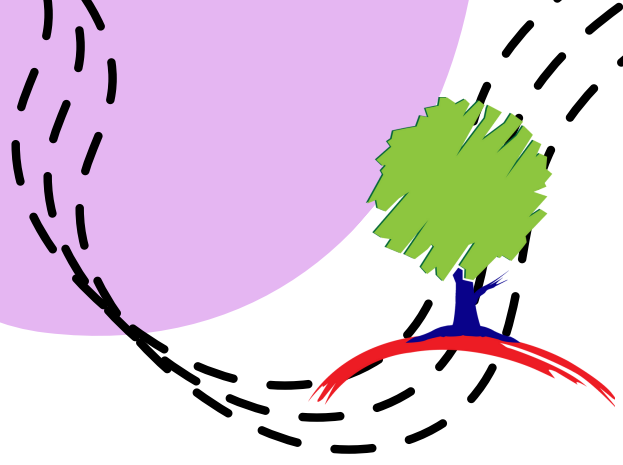
**In January of Year 11 students begin their externally set assignment,**

**Students select from a range of starting points and have 3 months to prepare for their 10 hour practical examination.**

# GCSE Art Textiles

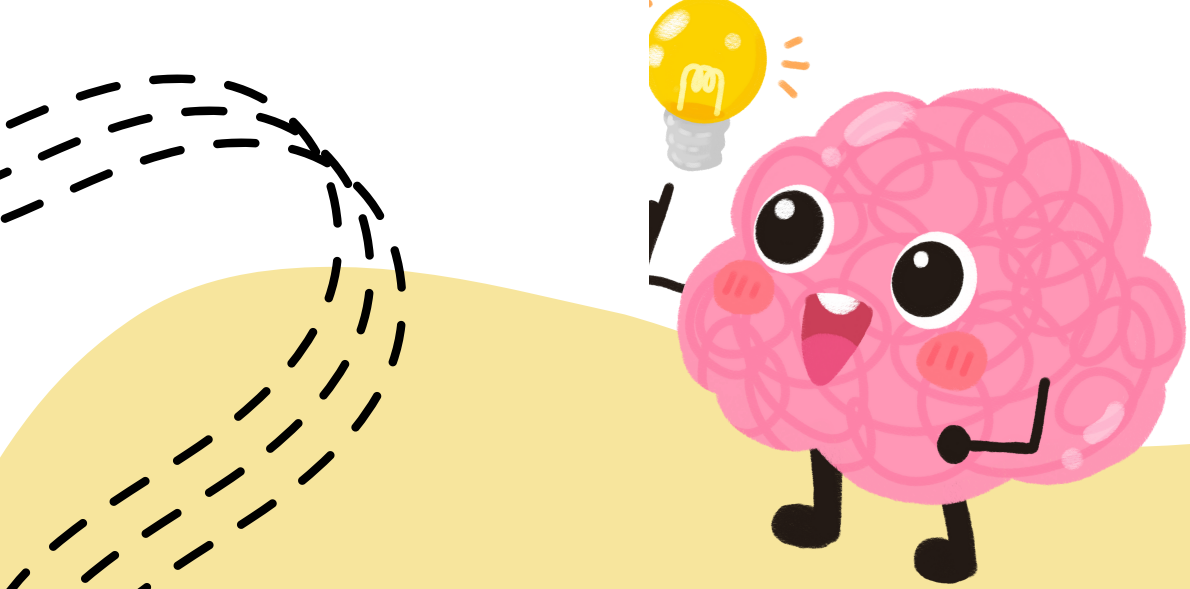
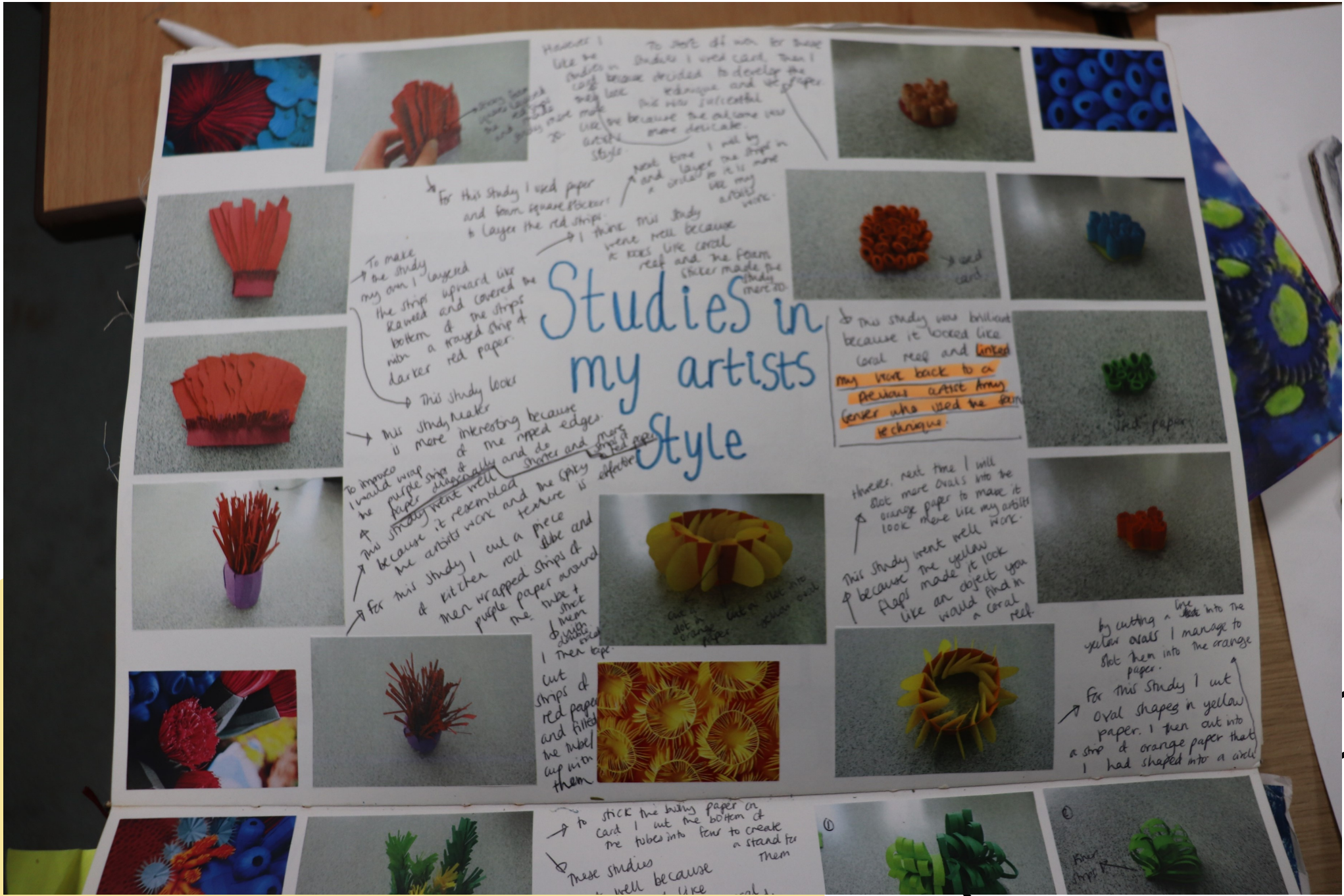
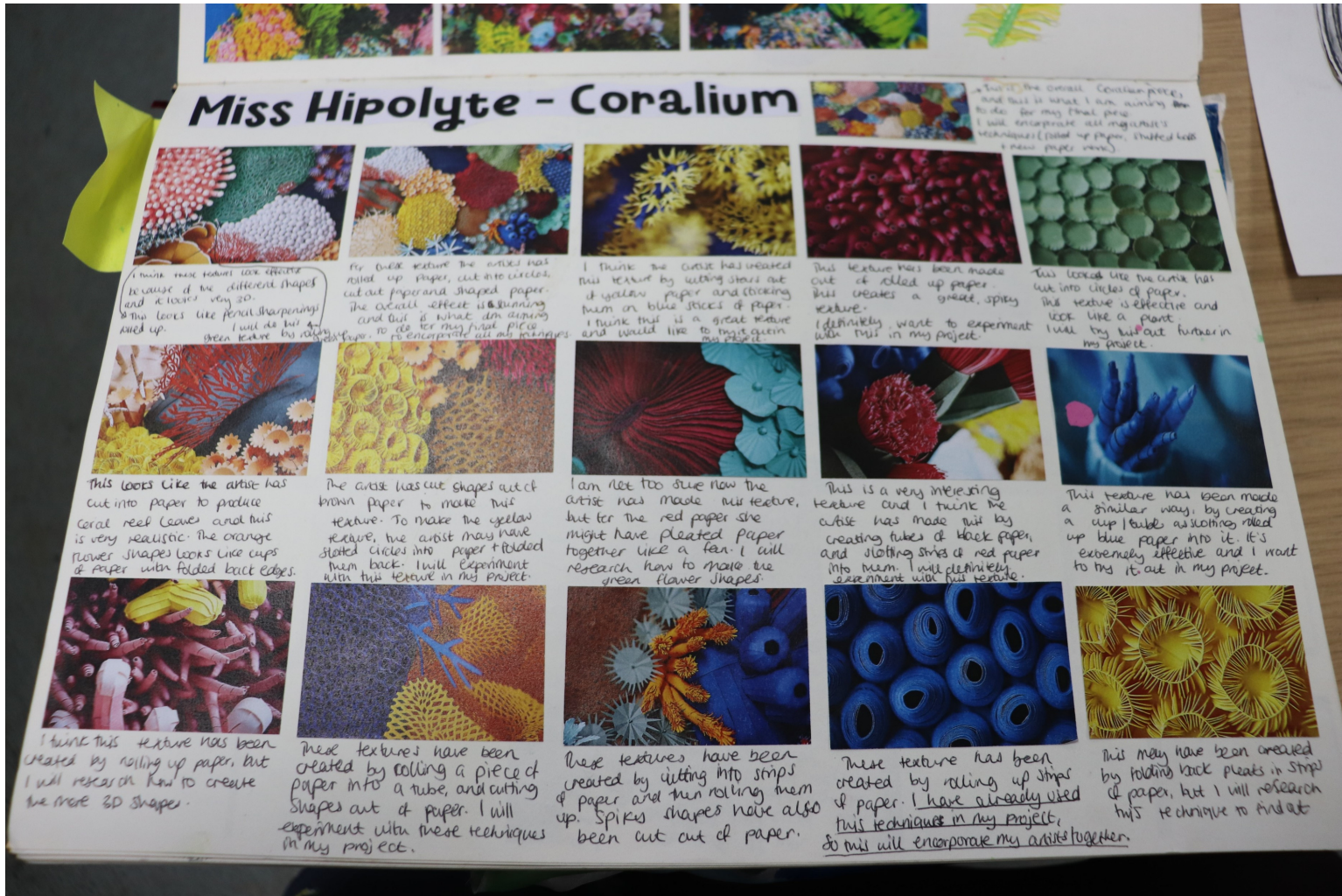
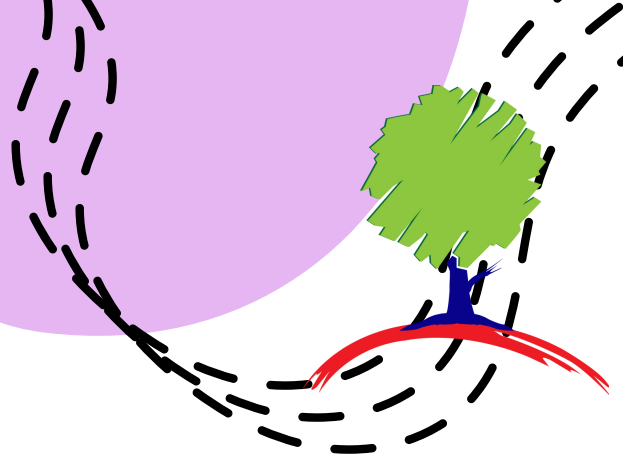
Using artists, designers and cultural influences, student will produce a range of research and studies investigating a theme.

## Research



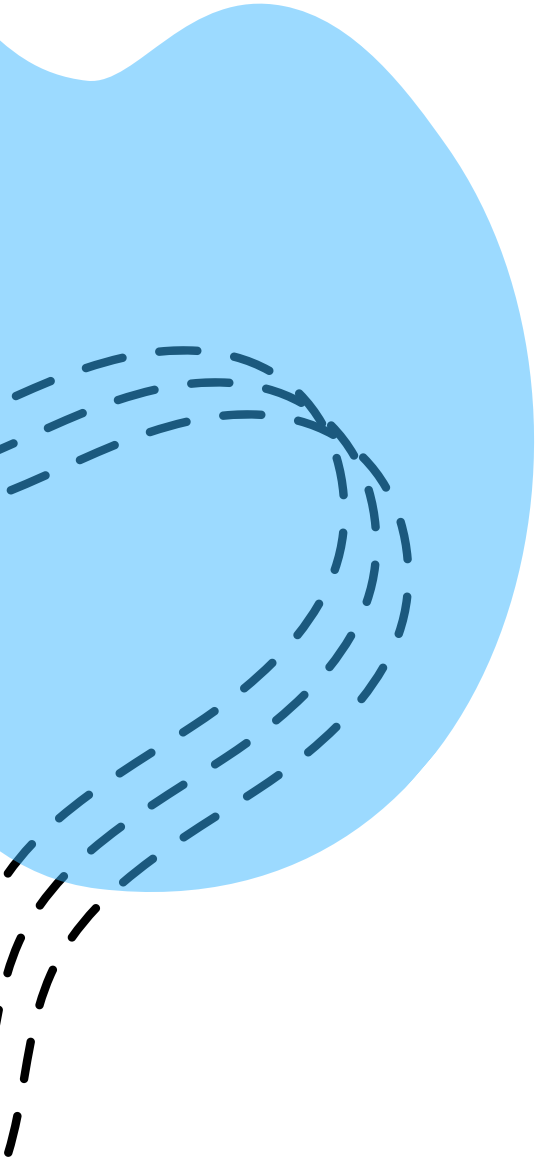
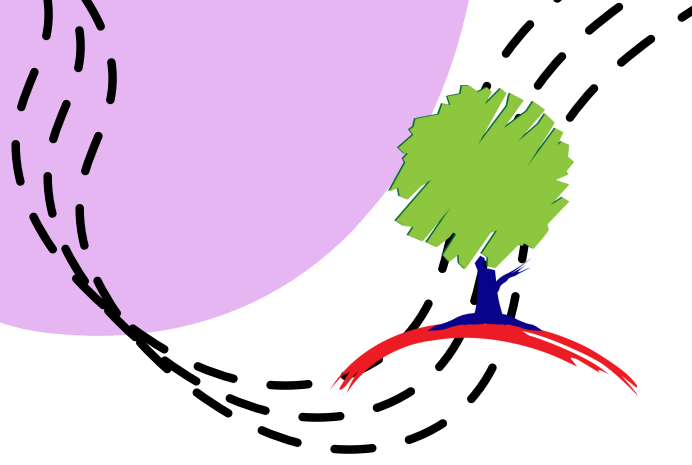
# GCSE Art Textiles

# Research



# GCSE Art Textiles

# Research



## Initial Studies

I chose this image because there was so much going on in it and the colours were very appealing to me.

I chose this image because I like coral reef, but I need to blend the light pink and orange more. I think it is a good 'bumpy' texture.

I chose this image because I like the shapes and bright colours.

**For this study I used dark blue synthetic fabric and heated it with a heat gun to make it shrivel up. Over the top I then used muslin and shaped it by pulling it and stuffed balls with wadding in it. I think the overall effect looks frayed and textured like coral reef, but I could maybe introduce colour.**

**To do these studies I used synthetic fabric to cover marbles, and then I tied wire around the marbles. I then heated the synthetic-covered marbles with a heat gun, took the marbles out and the ball-shapes were left. I think the appearance of these studies is effective and they represent shapes you see in coral reef. As a step further I would like to introduce some colour, but for this stage I was concentrating on shape.**

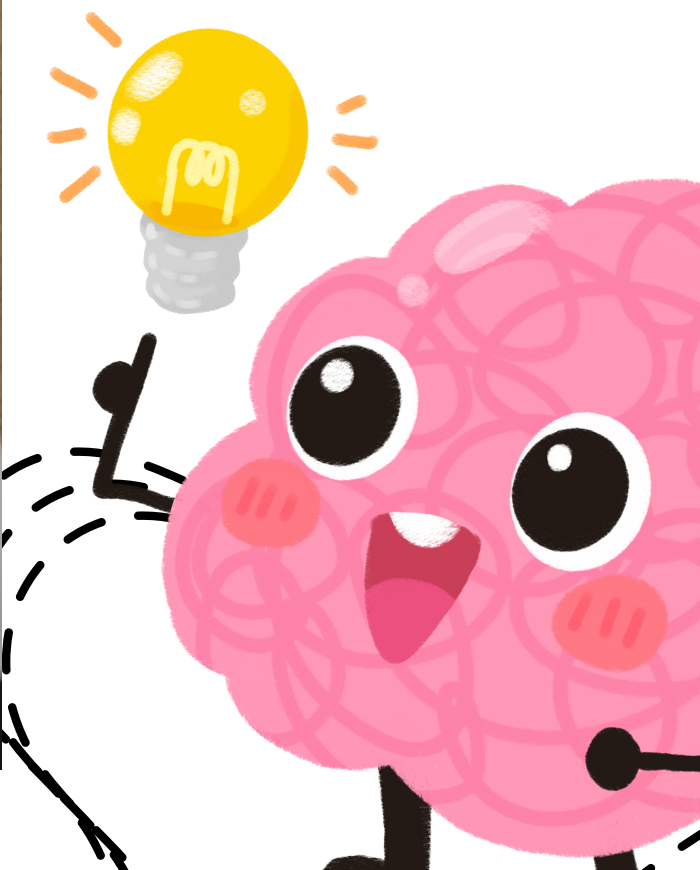
**For this study I used corrugated cardboard as the backing, and used clay to mould the lump on top. I then painted with acrylic the backing a dark pink and the ball a light pink. I also used orange and white to give the study the same appearance as the pink coral reef in the image.**

**For this study I used pink card as a backing. I then cut into the top of strips of felt and rolled them up. I then stuck the spiky felt objects onto the card. This looks like coral reef and is bright as well as giving a spiky texture.**

**For this study I poured glue into a petrie dish, then coloured the glue with blue ink. I then pressed rolled-up playdoh, plastic string and moss into the glue to try and represent elements of the coral reef image. I think the playdoh represents the texture and appearance of the image well, but it does look a bit messy.**

**For this study I used corrugated cardboard. The under layer I painted light pink. I then cut holes into the top layer with a scalpel and stuck that on top of the light pink cardboard to produce a texture. Next time I will make it more interesting and creative with glue, paint for example.**

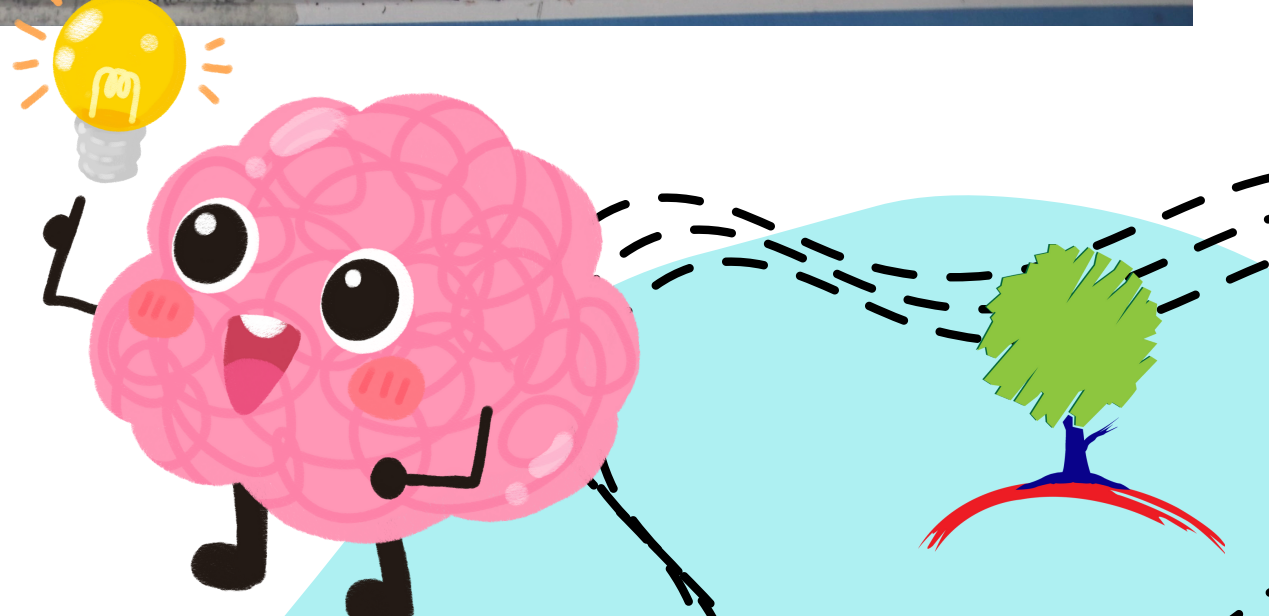
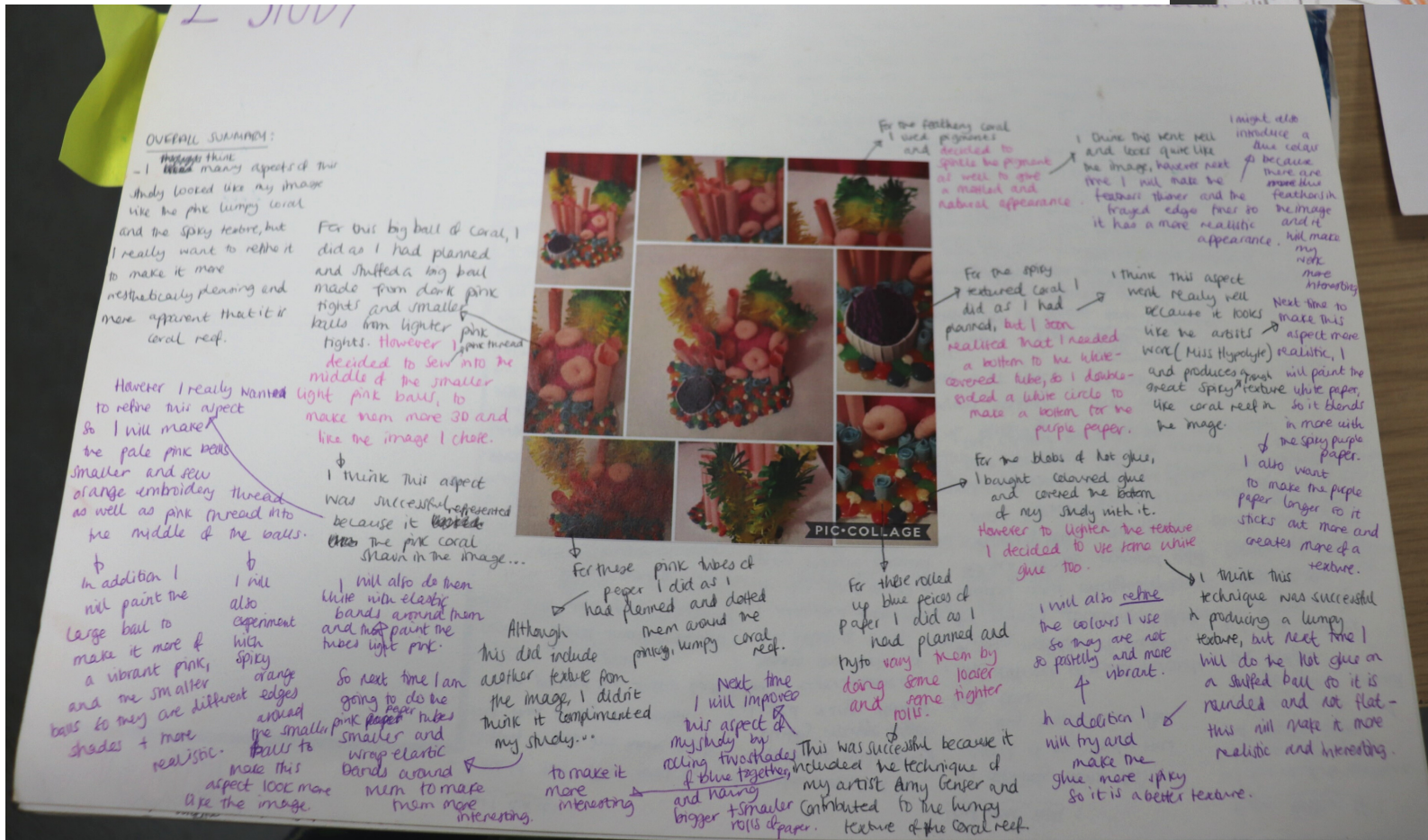
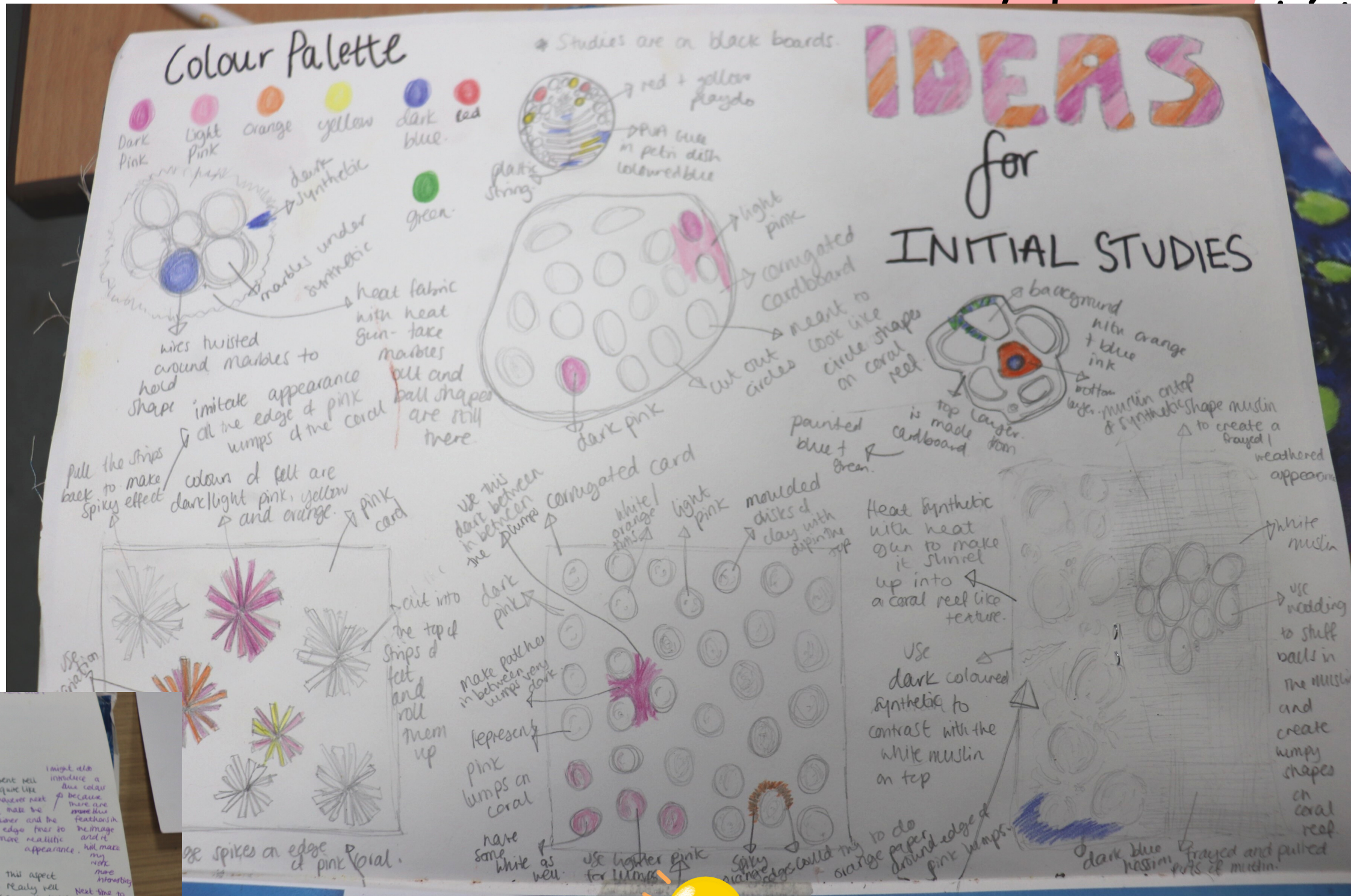
**For this study I used corrugated cardboard and cut holes in the second layer and stuck it on top of a layer of cardboard. Before I had painted with ink the orange and blue background and poked the second layer green and blue. Next time I will make sure backing isn't a square shape so it looks more realistic. I did this study on an additional image as another initial study.**



# GCSE Art Textiles

**Ideas**

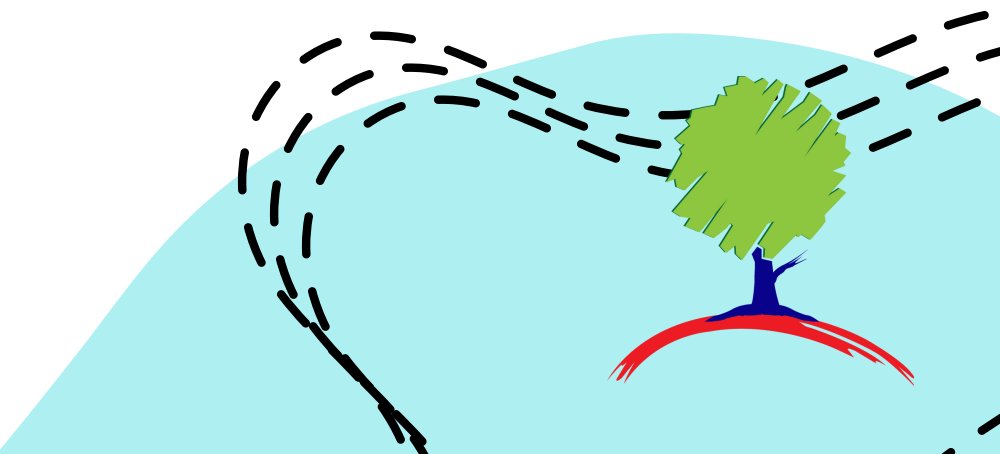
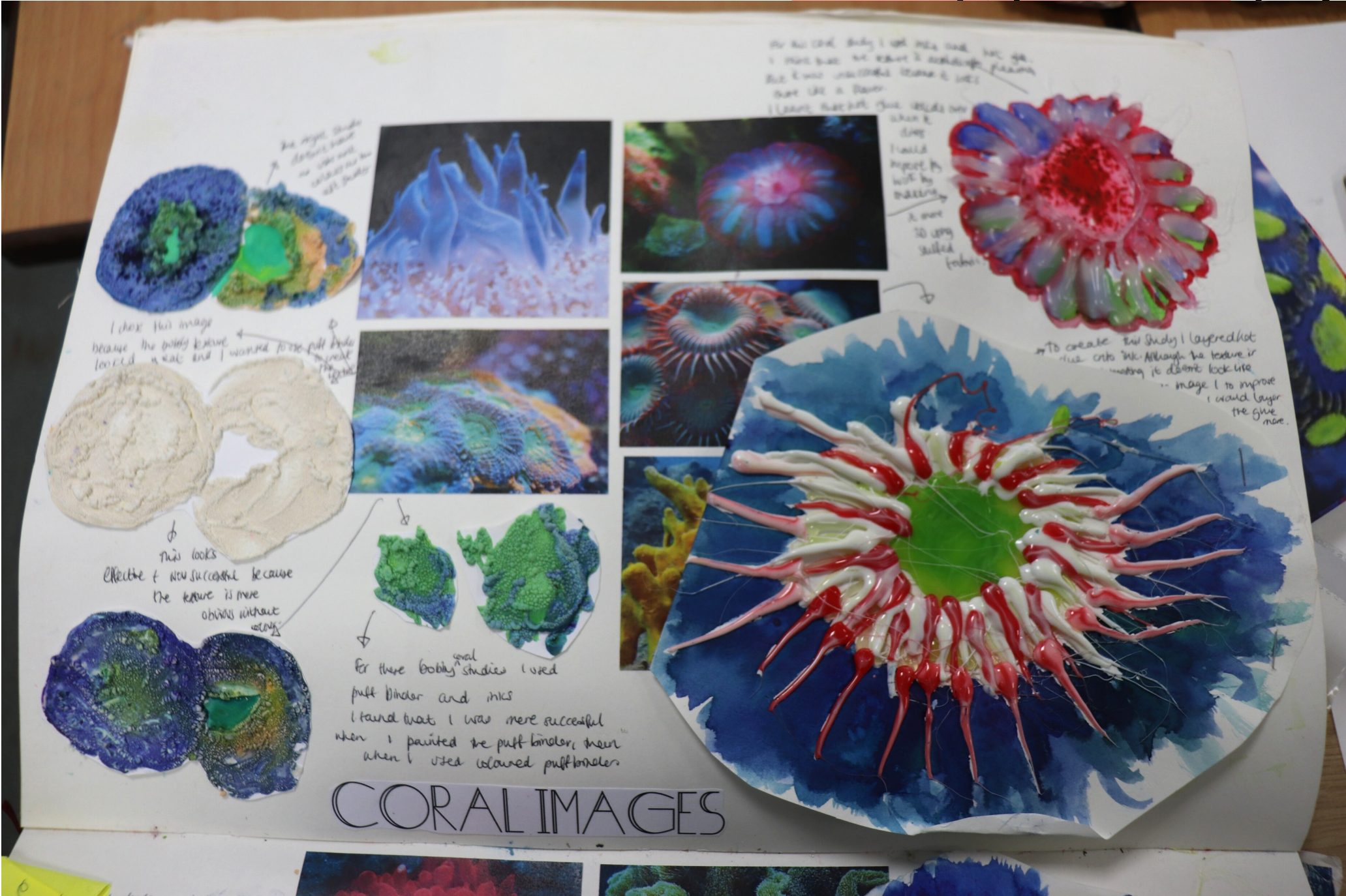
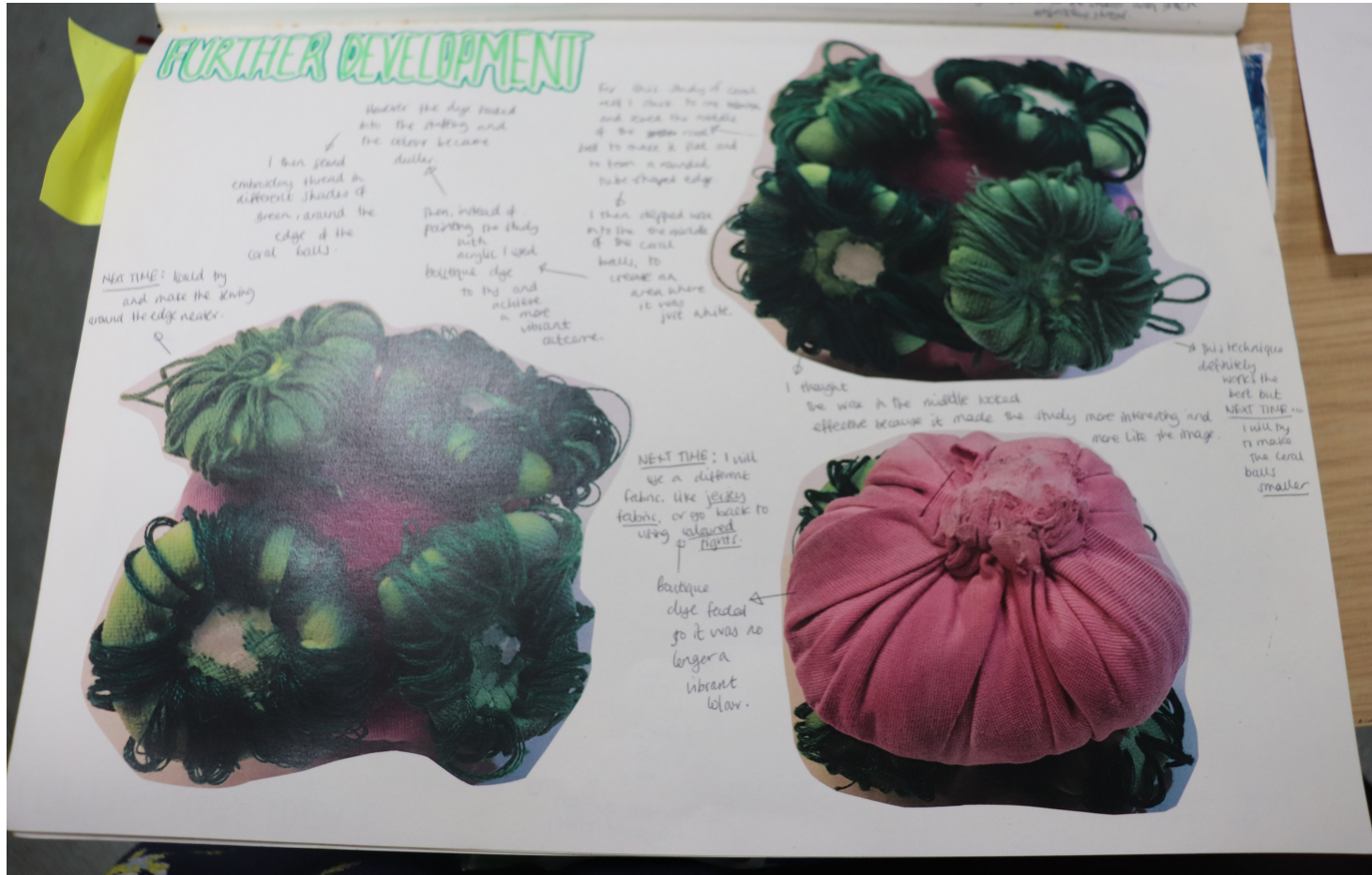
Initial ideas are produced and developed over a period of time to reflect the work of an artist and exploration of techniques.





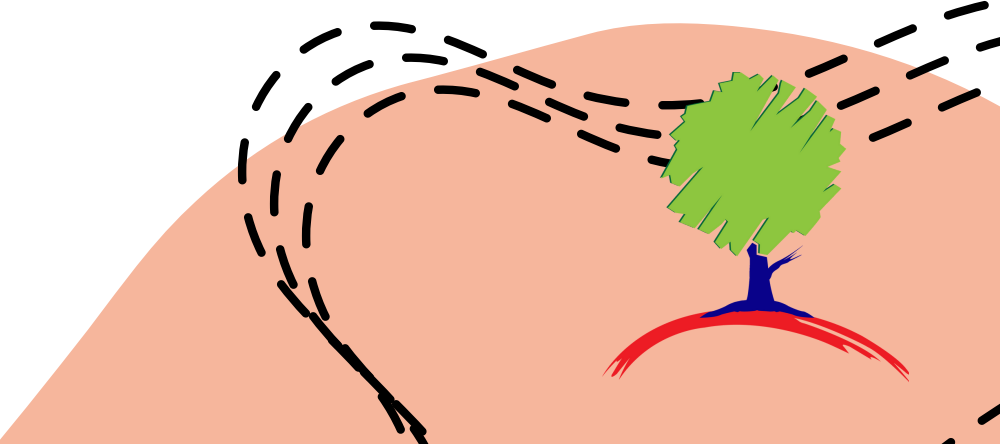
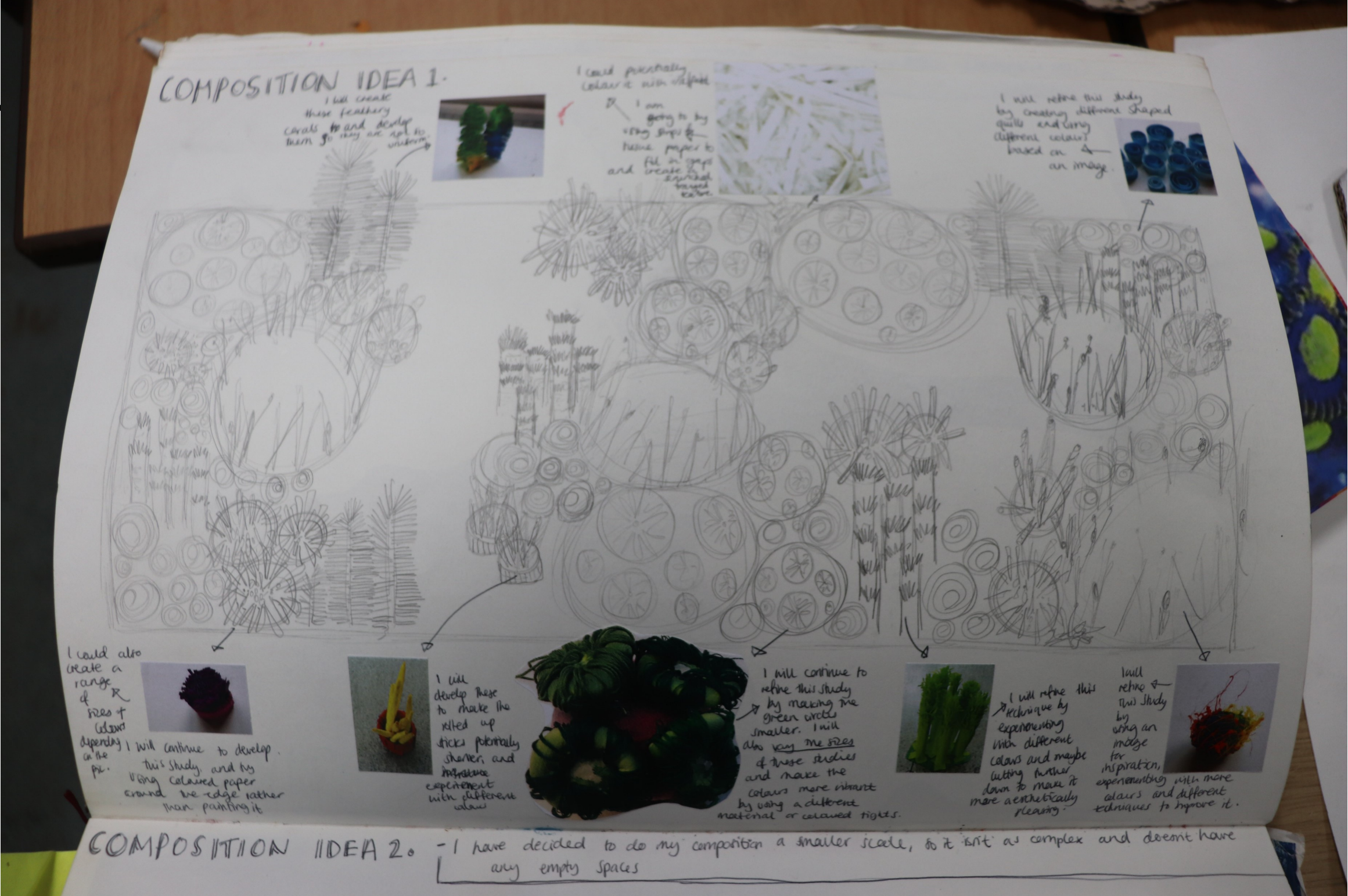
# GCSE Art Textiles

## Development



# GCSE Art Textiles

Here are some examples of final outcomes students have produced in previous years.



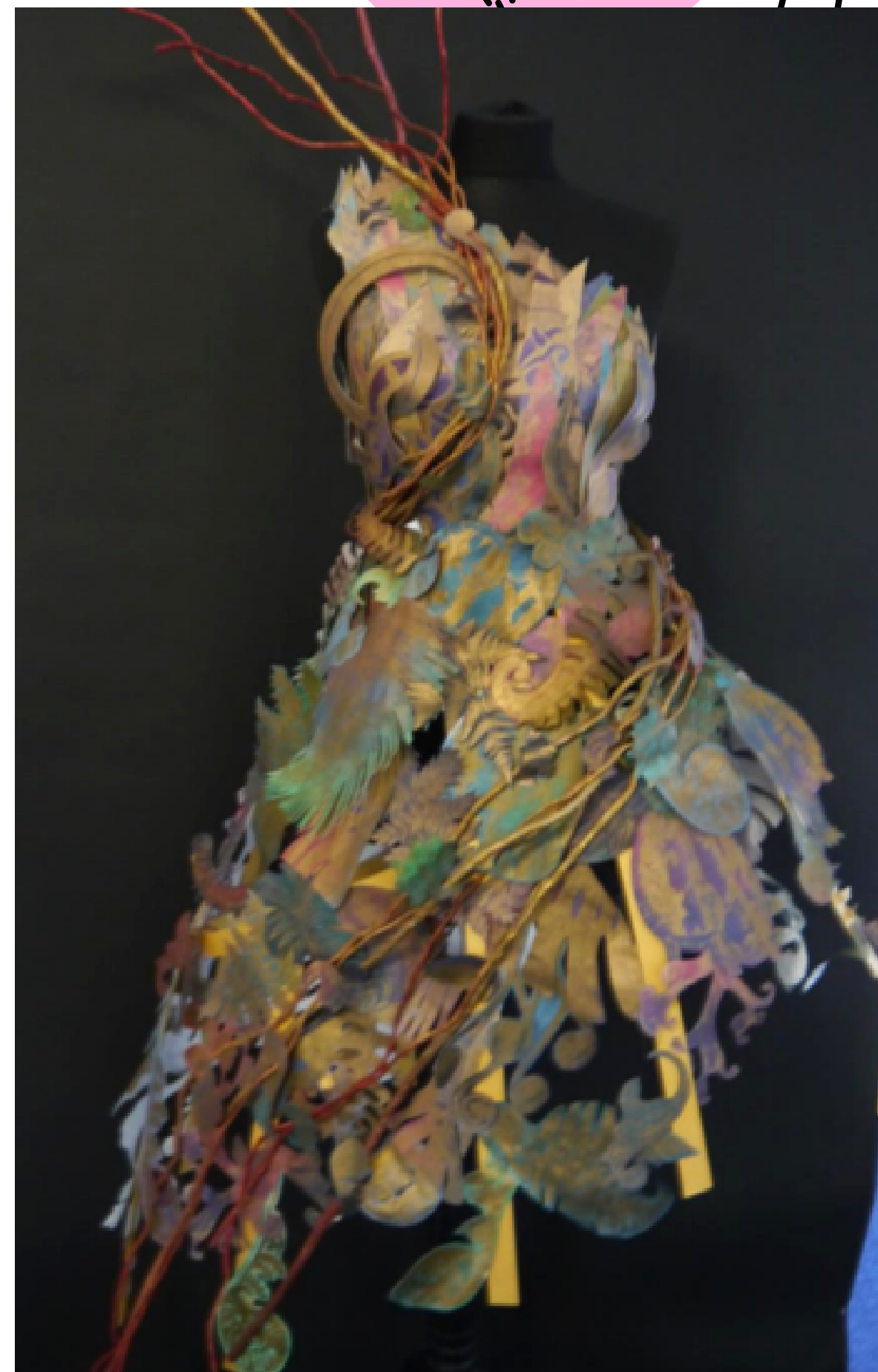
# GCSE Art Textiles

## Final Outcomes



# GCSE Art Textiles

## Final Outcomes



**Bramcote College**  
A member of The White Hills Park Trust